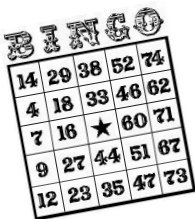
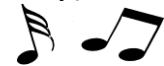


Celebrate the 1950s & 60s

22nd & 23rd June

Vintage Weekend

Bandstand - 11am-4pm Music from Lula May, The Rapids (both days)
Stacey Lynne Crowe (Saturday) and Johnny Victory (Sunday)



Marquee (if wet on Workshop Gallery)

12.00 & 2.00 Eyes down look in for a game of bingo

1.00 & 3.00 Beetle Drive

Exhibition Hall - Vintage Shopping

Magic Shows at 11.30, 12.30, 2.30 & 3.30



Town End-Saturday - 1.00 & 3.00 Learn to Jive with Red and Ginger

Sunday - 1.00, 2.15 & 3.15 Learn to hula hoop

Learning Centre-12.00-3.00 drop in and make a ribbon corsage £1

(craft activity suitable for older children and adults)

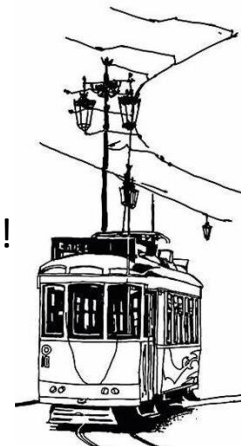


Out and about around site

Meet Laurel and Hardy-great photo opportunity!

Vintage trams running all day

Vintage Cars



All entertainment free

